

JUL 22 2005

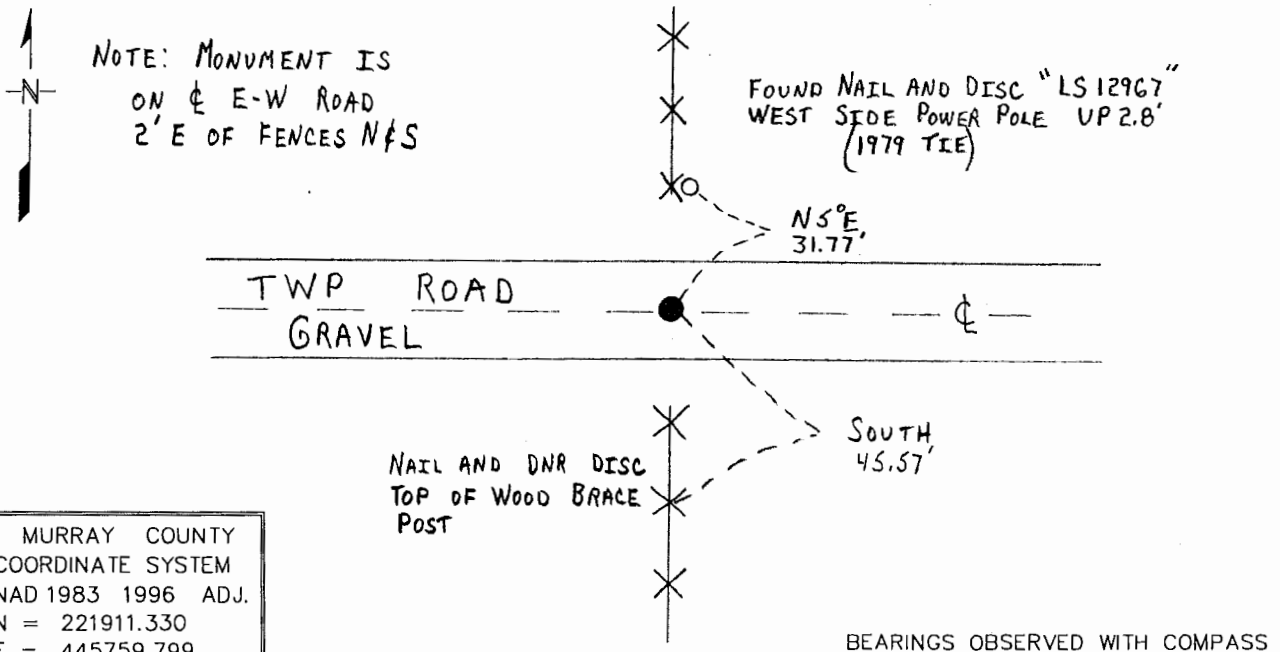
Index No. E-19

CERTIFICATE OF LOCATION OF GOVERNMENT CORNER

NORTH QUARTER Corner of Section 11, Township 108 N, Range 43 W
5th Principal Meridian, State of Minnesota, County of MURRAY

At the corner location shown on the sketch:

- On 9/29/03 found a 1/2" DIAMETER REBAR WITH A PLASTIC CAP STAMPED
DATE "MARTIN RLS 12967". DOWN 0.7'
- left monument as found, lowered monument, removed monument (explain)
- On _____ Placed a _____
DATE _____



MURRAY COUNTY
COORDINATE SYSTEM
NAD 1983 1996 ADJ.
N = 221911.330
E = 445759.799

Statement of evidence for this corner location is on back of this page. WMA00165.00.00.01

I certify that this document was researched and prepared by me or under my direct supervision.

SIGNATURE Bruce W. Sheppard DATE 7-19-05 License Number 17003
 Title: Land Surveyor Professional Engineer County Surveyor County Engineer

North Quarter Corner Section 11, Township 108 North, Range 43 West

The DNR Division of Lands and Minerals contacted the following for survey information:

Minnesota Secretary of State's Office
Murray County Recorder's Office
Murray County Highway Engineer's Office
Madsen Land Surveying, Inc. of Fairmont

- 1866 U.S. General Land Office notes, obtained from the Secretary of State's Office, show the corner marked with a post in a mound.
- 1957 January, a page in a DNR field notebook, shows corner but does not indicate what kind of monument was found or set. The corner is shown:
in line with a fence south
on line between adjoining section corners
2649.3 feet from the northeast corner of Section 11
2649.4 feet from the northwest corner of Section 11
- 1963 September, a page in a DNR field notebook, shows that the location of corner was computed per the January 1957 survey. A railroad spike was set to mark the location of the corner and was found to be:
5 feet, more or less, west of a fence south
- 1965 October, a page in a DNR field notebook, shows that a railroad spike was found at corner.
- 1979 July, field notes for a survey in Section 2 by Gary Martin, LS 12967, obtained from Madsen Land Surveying, Inc., state that the area of the corner was excavated and a 3 inch square wooden hub was found. A ½ inch diameter re-bar was set over the hub and the following ties were taken to it:
1 foot north of the centerline of an east-west township road
2.5 feet east of a fence line north
1 foot east of a fence line south
corner fence post, south, 36.23 feet
power pole, north-northeast, 31.80 feet
brace fence post, southeast, 41.48 feet
2639.47 feet from the northeast corner of Section 11
2651.52 feet from the northwest corner of Section 11
- 2003 September 29, the DNR Division of Lands and Minerals found a ½ inch diameter re-bar with a plastic cap marked "MARTIN RLS 12967" at corner, 0.7 of a foot below the road surface. Searched for and found one record tie as shown on the sketch of reference ties. The rebar was found to be:
2649.21 feet from the northwest corner of Section 11
2645.20 feet from the northeast corner of Section 11
4.36 feet north and 2.00 feet east of the lost position for corner

Analysis of the above information led the DNR Division of Lands and Minerals to conclude that the found re-bar with plastic cap, which was set over a 3 inch square wooden hub in 1979 by Gary Martin, LS 12967, marks the location of the corner.